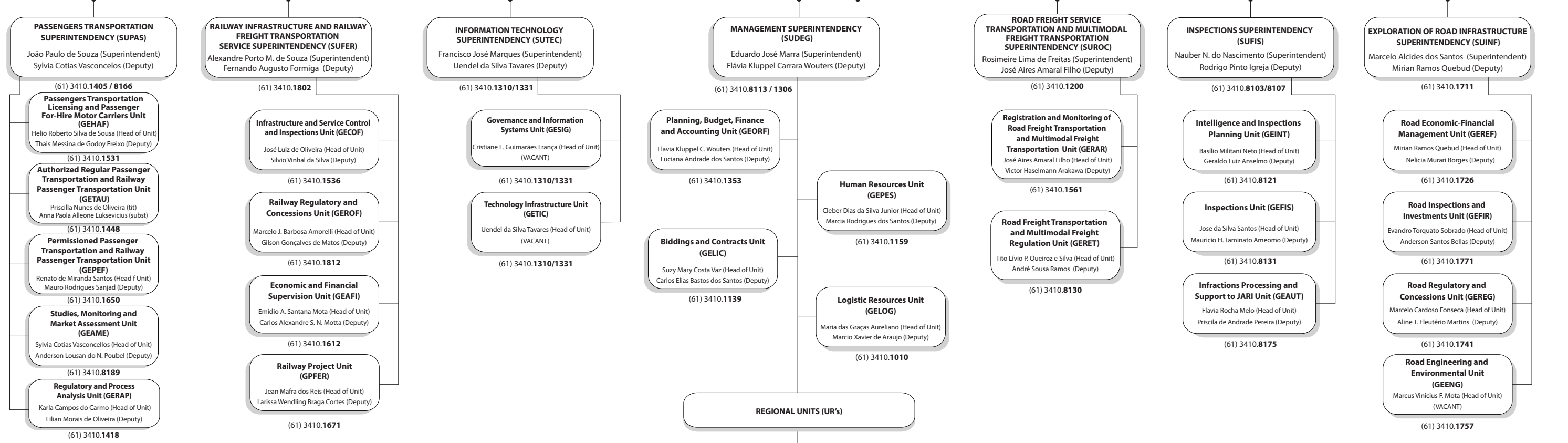
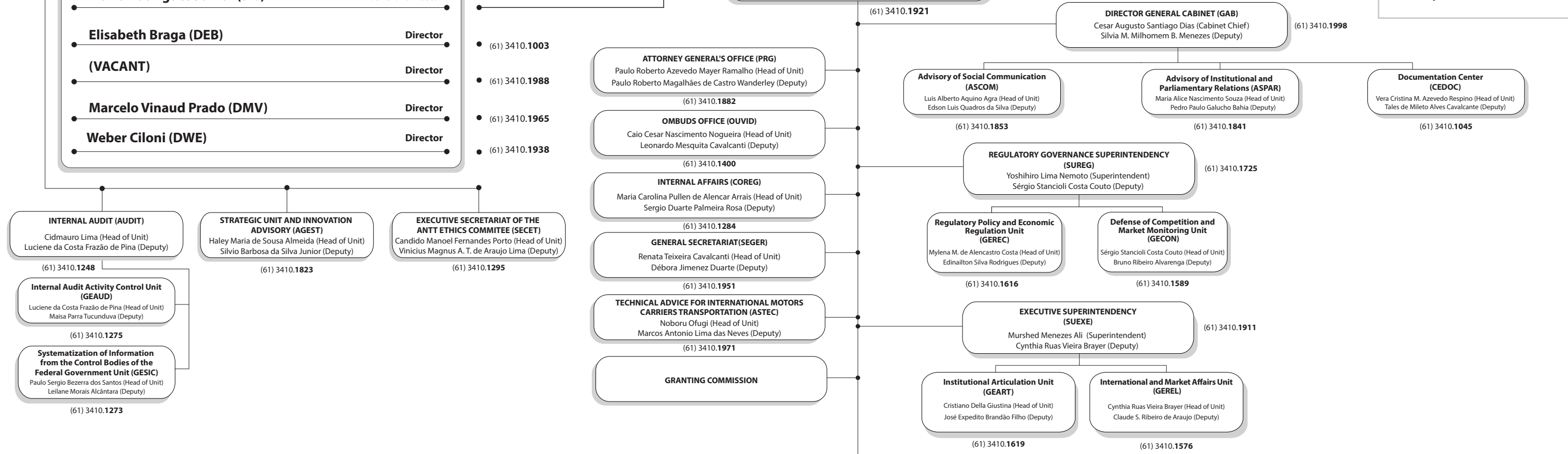


BOARD OF DIRECTORS

- Mario Rodrigues Junior (DG)** General Director
- Elisabeth Braga (DEB)** Director
- (VACANT)** Director
- Marcelo Vinaud Prado (DMV)** Director
- Weber Ciloni (DWE)** Director

GENERAL DIRECTORATE

Mario Rodrigues Junior
Elisabeth Braga (deputy)



Regional Unit	Head of Unit	Deputy	Contact
URRJ - Regional Unit of Rio de Janeiro	COAFI/SUDEG - Lisangela Severiano Jorge	COFIS/SUFIS - Marcelo Bavler Marcos	(21) 3504.4700
URSP - Regional Unit of São Paulo	COAFI/SUDEG - Regina Lamongi Dieckmann	COFIS/SUFIS - Dalton de Campos Mello Filho	(11) 3556.4700
URMG - Unidade Regional de Minas Gerais	COAFI/SUDEG - Ewerton Laranji Mendonça	COFIS/SUFIS - Sabrina Scholte Reis Gonçalves	(31) 3303.1300
URRS - Regional Unit of Rio Grande do Sul	COAFI/SUDEG - Shirley Theresinha Garaventa	COFIS/SUFIS - Helano Teixeira Moreira	(51) 3375.4700
URCE - Regional Unit of Ceará	COAFI/SUDEG - Ellen Lilipory	COFIS/SUFIS - Icaro Sousa Araujo	(85) 3388.8100
URMA - Regional Unit of Maranhão	COAFI/SUDEG - Fabiano Flexa Nogueira	COFIS/SUFIS - Cléopas Coelho Cunha	(98) 3311.1200
URBA - Regional Unit of Bahia	COAFI/SUDEG - José Carlos Moraes Trindade	COFIS/SUFIS - Fábio Oliveira Santos	(71) 3311.0300 / 0301
URPE - Regional Unit of Pernambuco	COAFI/SUDEG - Marina Veloso de Melo dos Santos	COFIS/SUFIS - Arlindo Santos	(81) 3464.7200
URCN - Regional Unit of Centro-Norte	COAFI/SUFIS - Felipe Ricardo da Costa Freitas		(61) 3410.1567
URSC - Regional Unit of Santa Catarina	COAFI/SUDEG - Fabiana Carvalho da Silva	COFIS/SUFIS - Daniel Krause	(48) 3281-4500