
Rodovia BR-101/RS



RODOVIA DE INTEGRAÇÃO DO SUL
BR101/RS
km 0+000 - km 87+853

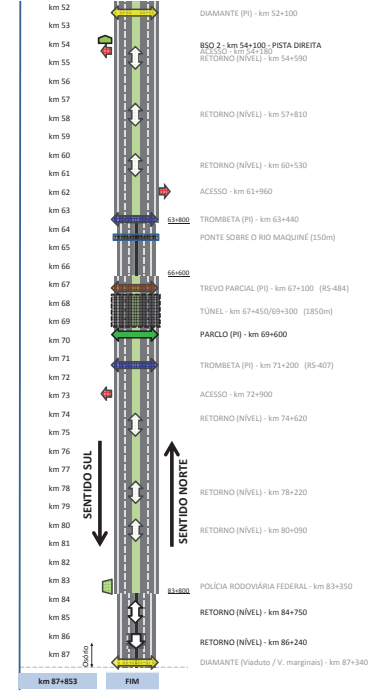
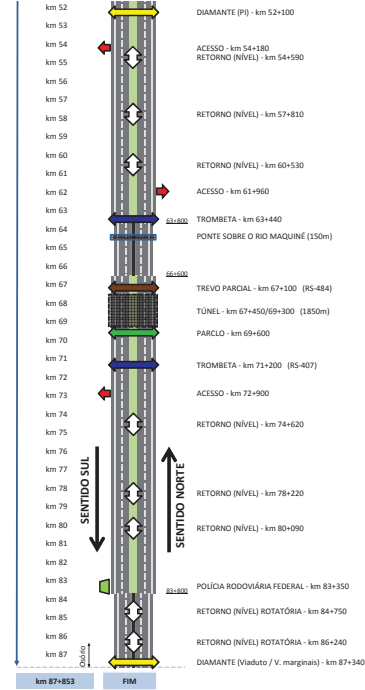
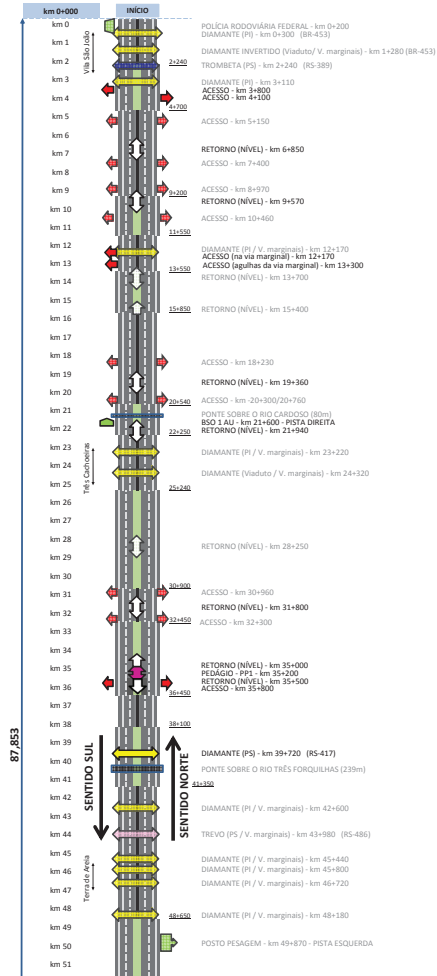
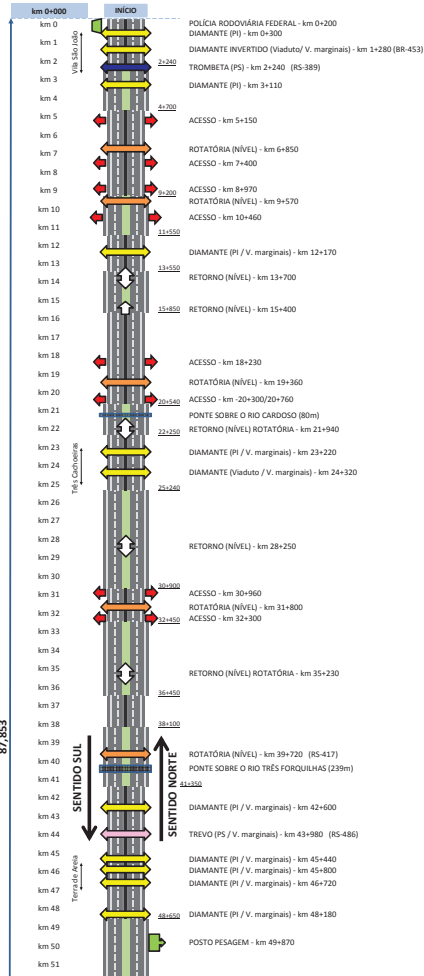
RODOVIA DE INTEGRAÇÃO DO SUL
BR101/RS
km 0+000 - km 87+853

CONDIÇÃO ATUAL

CONDIÇÃO FUTURA

CONDIÇÃO ATUAL

CONDIÇÃO FUTURA

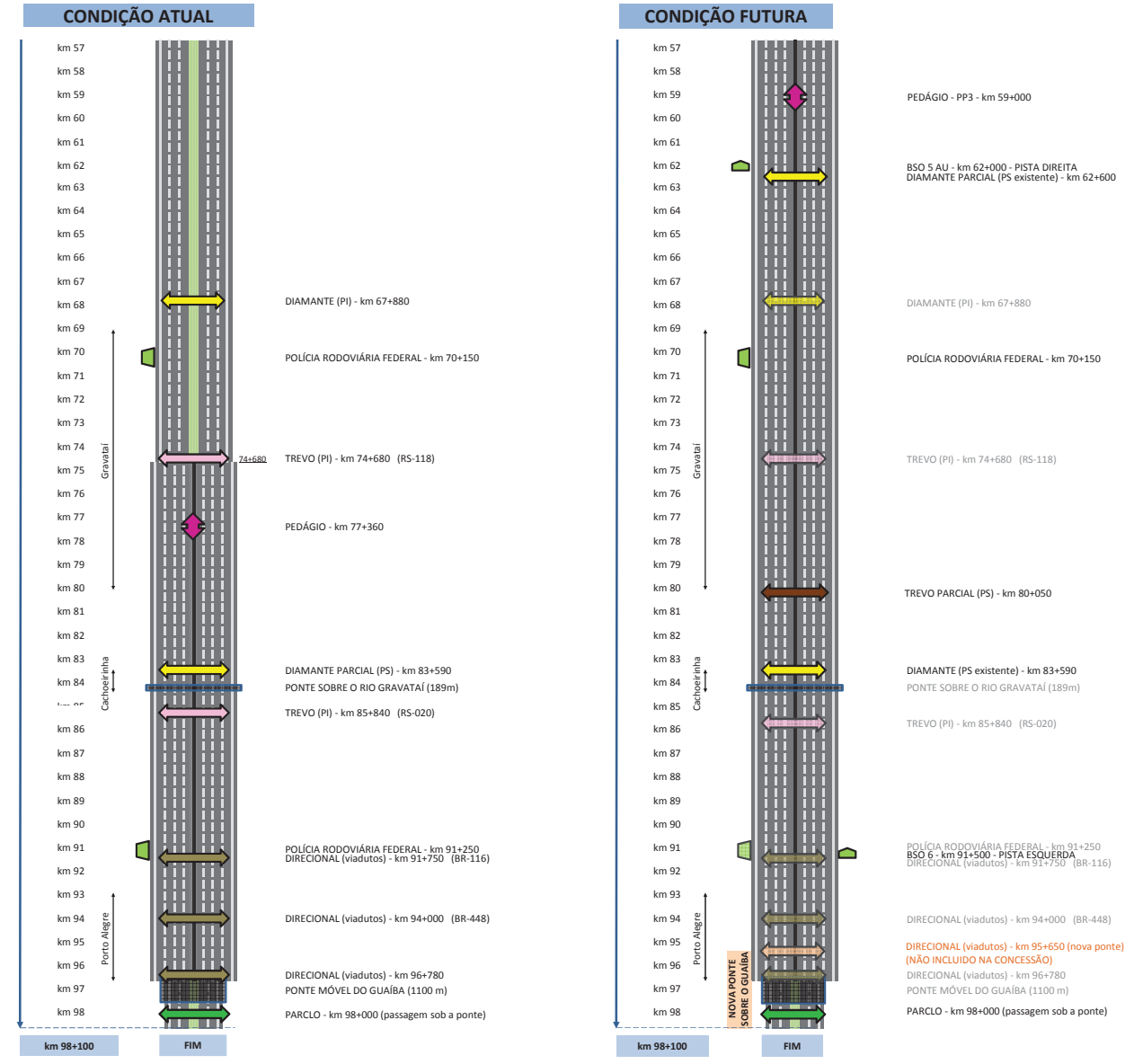
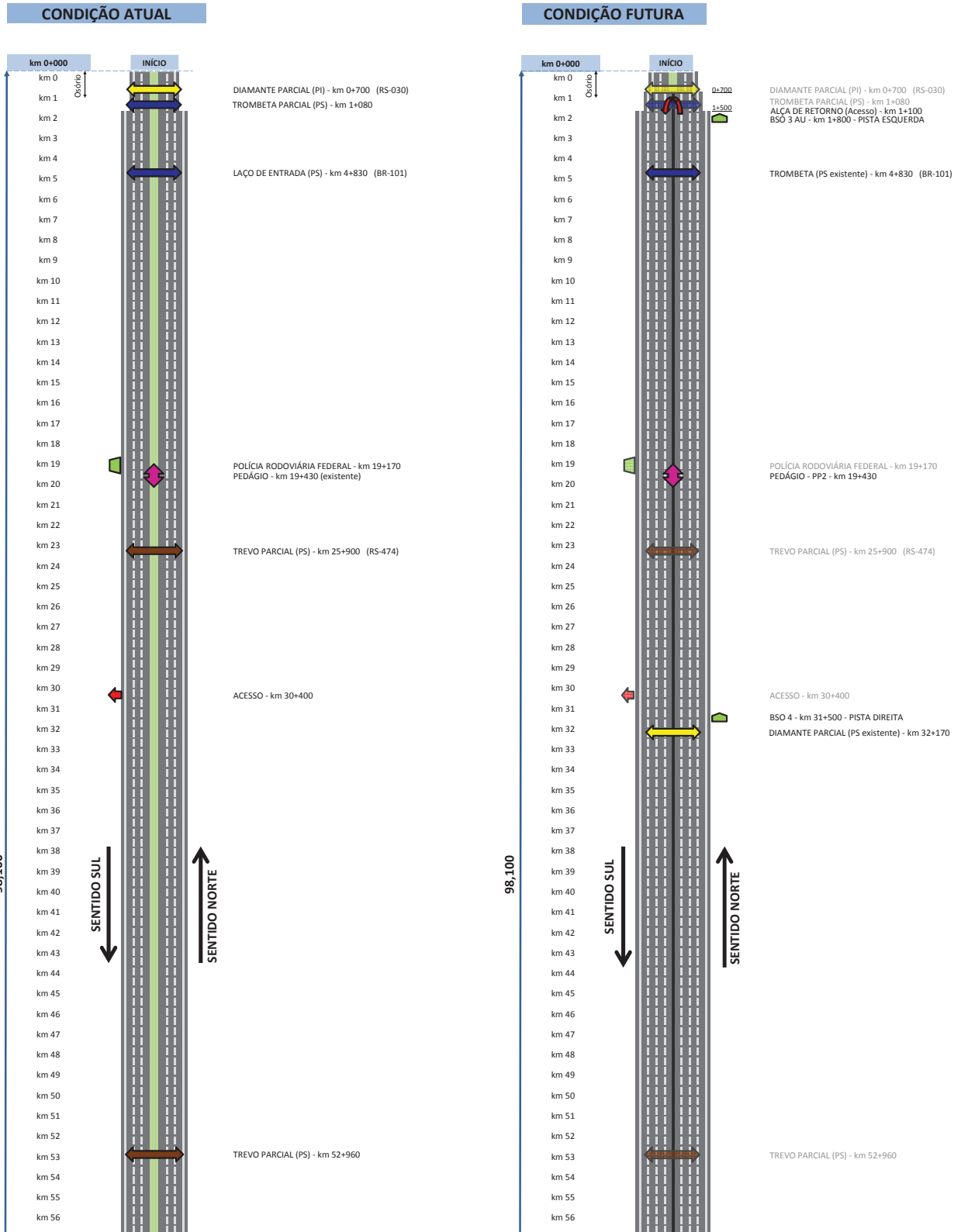


Rodovia BR-290/RS



RODOVIA DE INTEGRAÇÃO DO SUL BR290/RS km 0+000 - km 98+100

RODOVIA DE INTEGRAÇÃO DO SUL BR290/RS km 0+000 - km 98+100

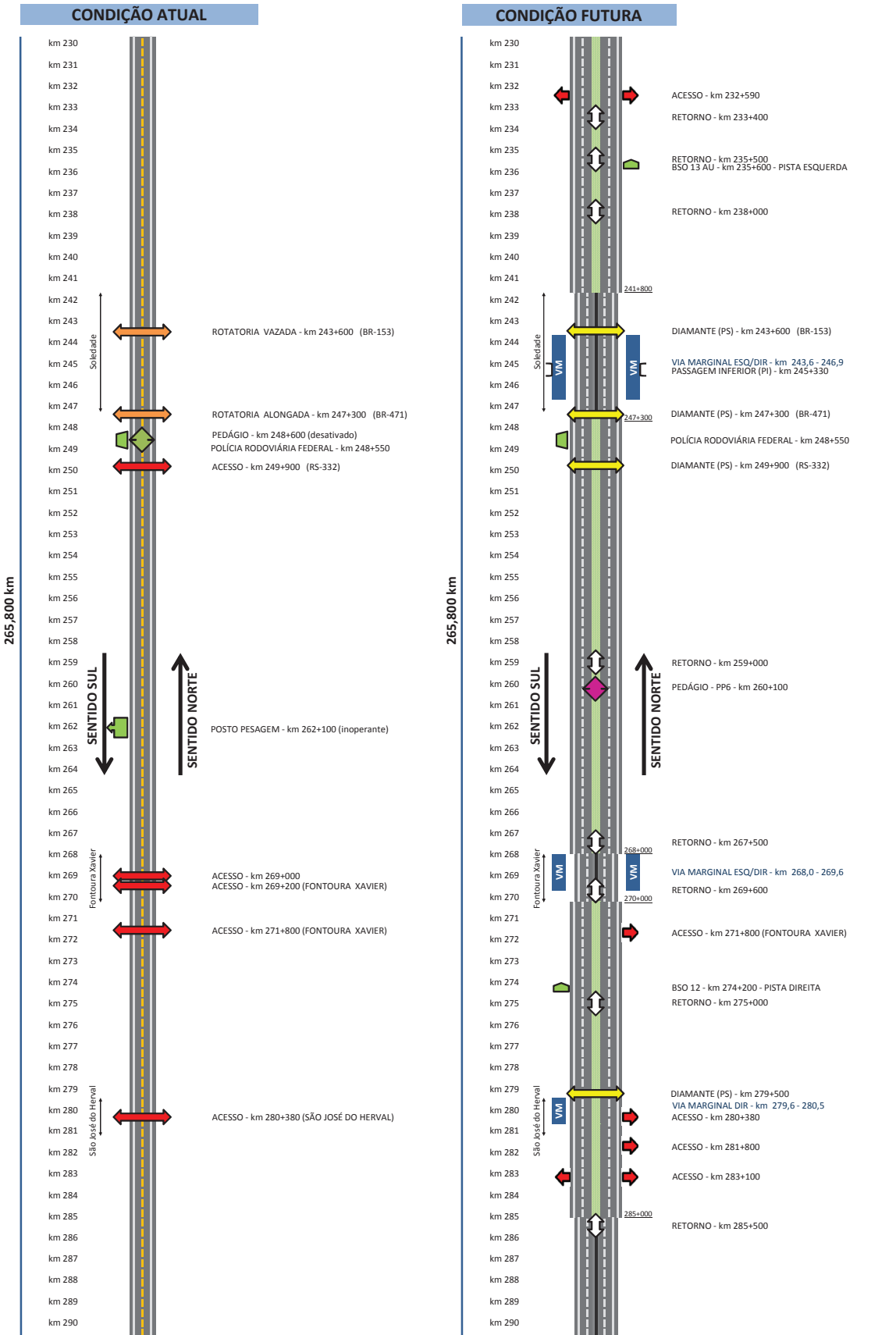
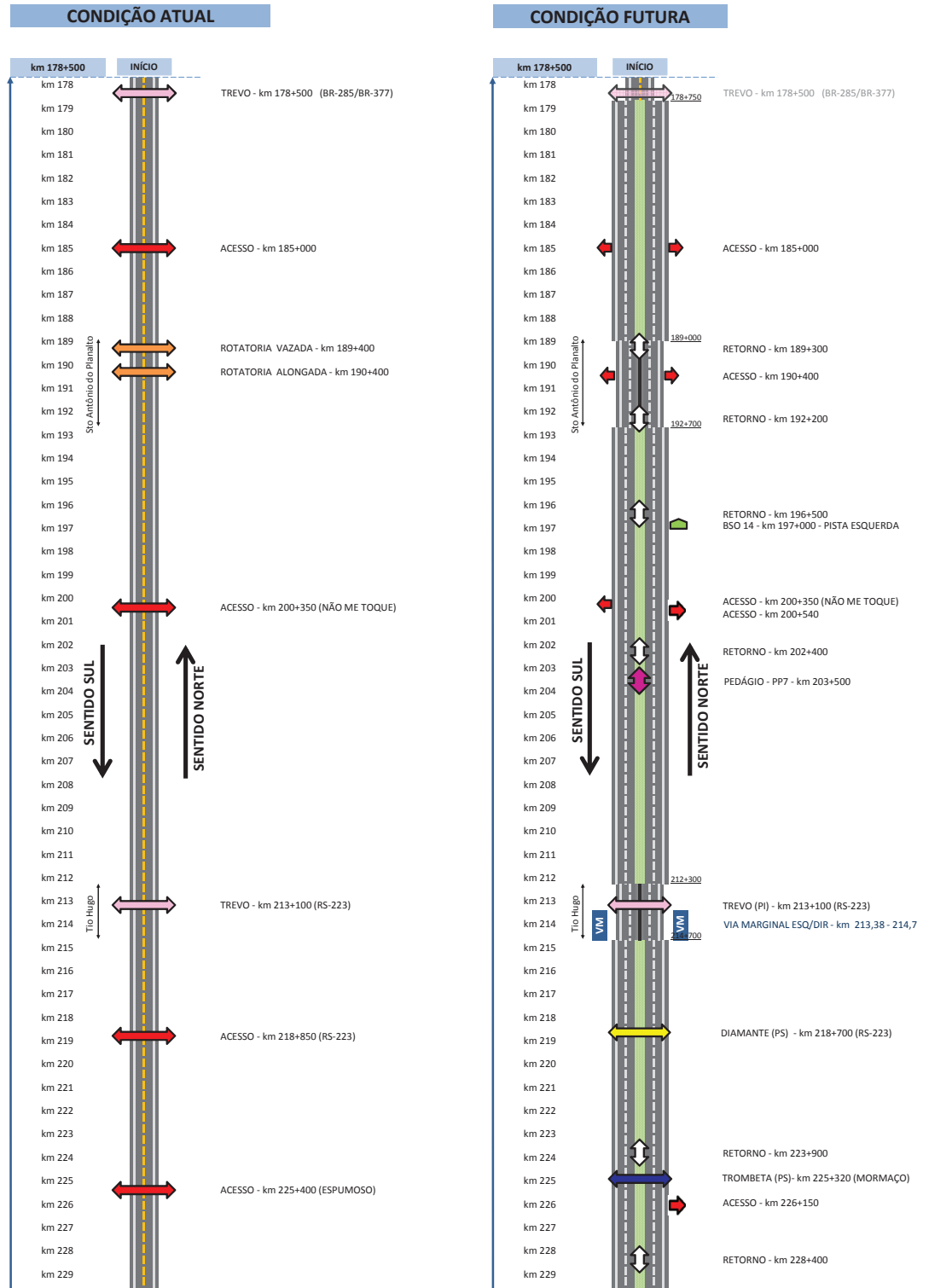


Rodovia BR-386/RS



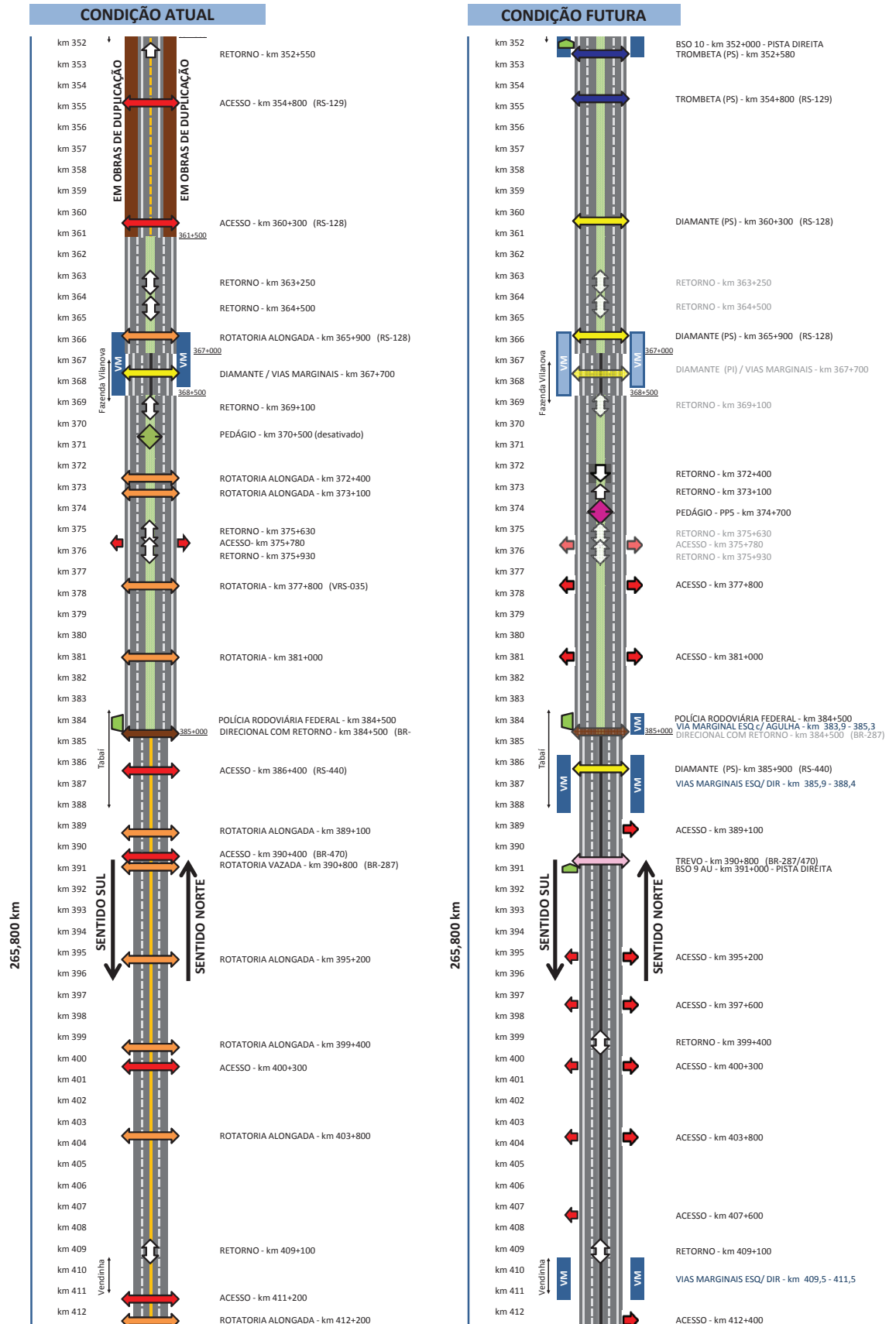
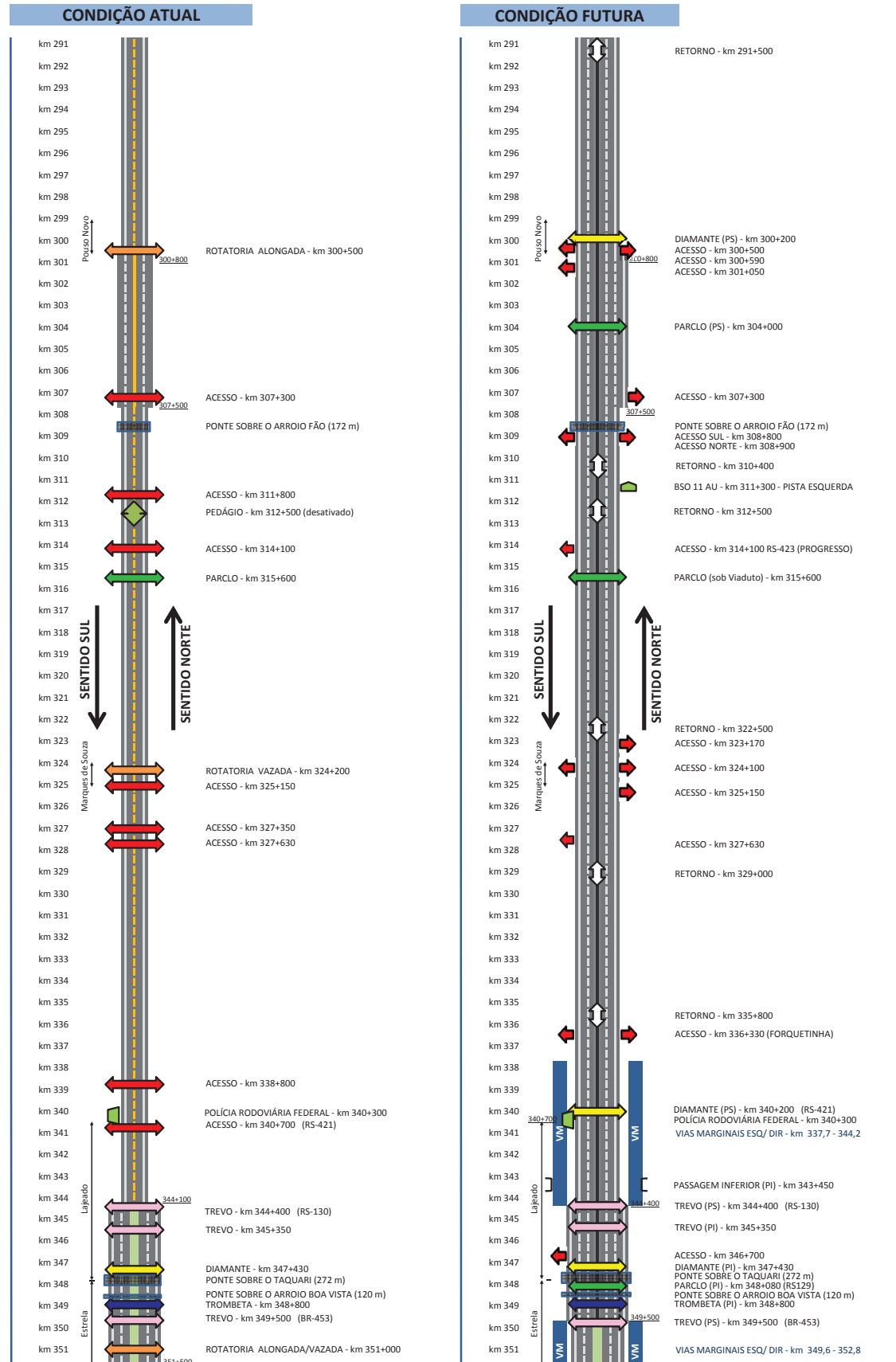
RODOVIA DE INTEGRAÇÃO DO SUL BR386/RS km 178+500 - km 444+300

RODOVIA DE INTEGRAÇÃO DO SUL BR386/RS km 178+500 - km 444+300



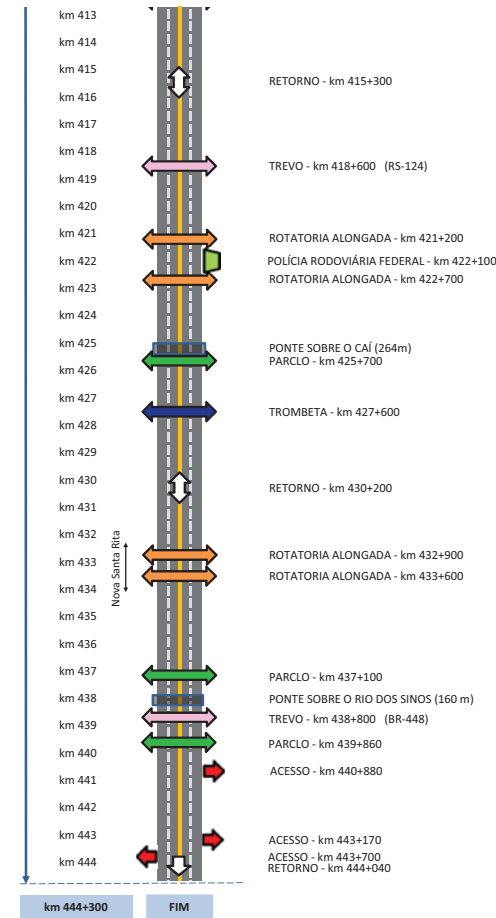
**RODOVIA DE INTEGRAÇÃO DO SUL
BR386/RS
km 178+500 - km 444+300**

**RODOVIA DE INTEGRAÇÃO DO SUL
BR386/RS
km 178+500 - km 444+300**

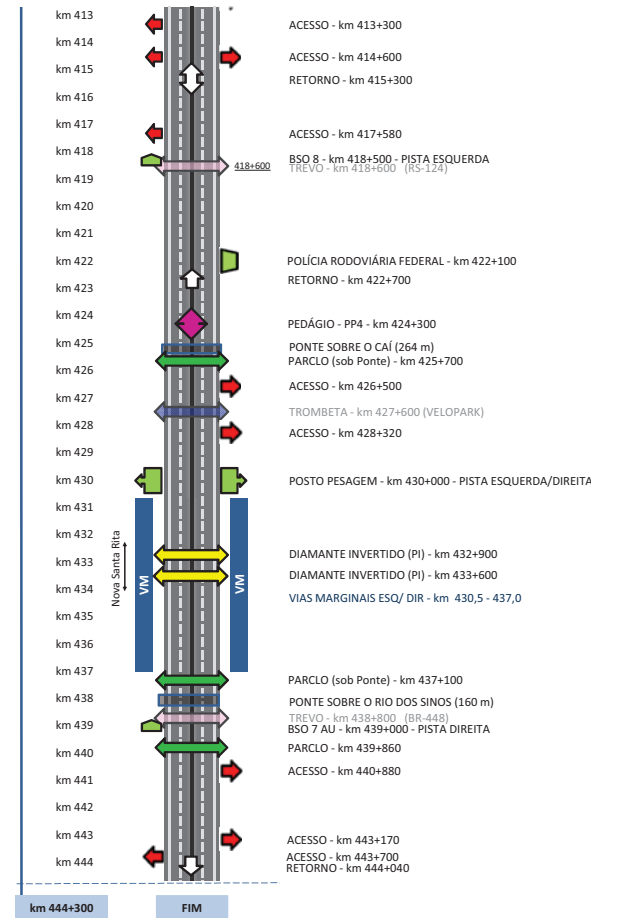


**RODOVIA DE INTEGRAÇÃO DO SUL
BR386/RS
km 178+500 - km 444+300**

CONDIÇÃO ATUAL



CONDIÇÃO FUTURA



Rodovia BR-448/RS



**RODOVIA DE INTEGRAÇÃO DO SUL
BR448/RS
km 0+450 - km 22+073**

